

## Web Based Professional Video Management and Storage Software

The FlexWATCH SmartNVR is video management software solution that enables you to simultaneously view, store, and voice, video, and data on the Web browser. SmartNVR can control multi-monitor to provides virtual matrix functionality

SmartNVR can manage video feeds from multiple locations around the world. The result is greater scalability and accessibility – at a lower cost –

Built-in a distributed client-server architecture, SmartNVR offers multiple viewer, player on the multiple connected web client and also interoperated with Alarm, an map application together. When used with FlexWATCH IP Camera , Video Server and NV , SmartNVR delivers broad surveillance functionality to campus environments, airport and seaport perimeters, citywide operations , virtually any environment.

### Key features

Web based IP video management software

Quadplex support

(live view, playback, record, backup)

Event, Motion, Scheduled recording & conditional playback

MJPEG, MPEG4, H.264 stream support

Multi vendor's camera and video server support

Comprised of a set of

Smart NVR service

(recording & admin: **Windows Service**)

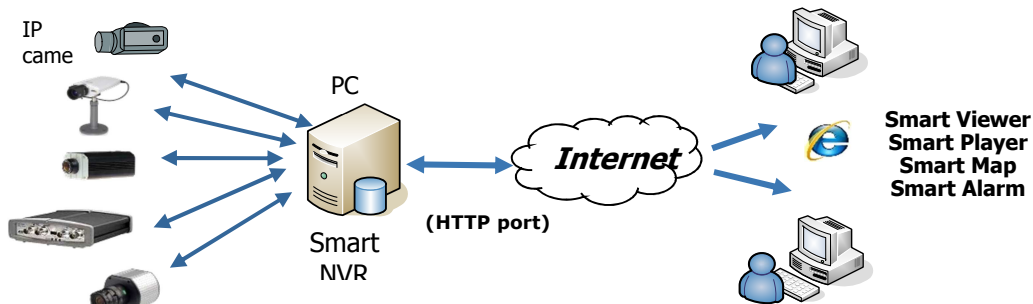
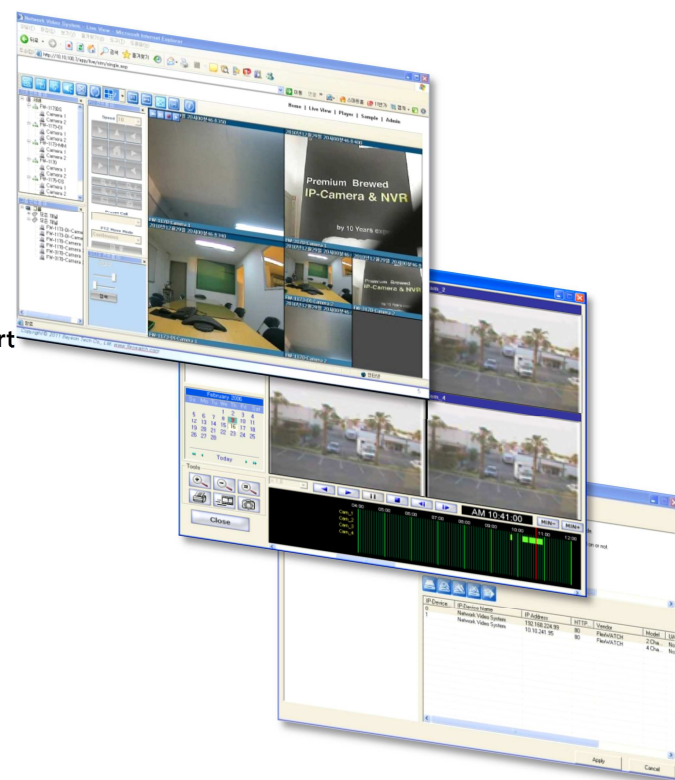
Smart Viewer, Player (ActiveX)

Smart Map, Alarm (Windows App)

Megapixel camera support (up to 3M)

Dynamic User authentication

Up to 128channels support (min: 4ch)



## Web Based Professional Video Management and Storage Software

### Smart NVR Service

Windows Service for recording & configuration  
Browser enabled NVR  
Performance depends on PC performance  
Product key required (16,32,64ch version)

### Main functions of Smart Viewer

Web based App, icon based user interface  
Various display group windows  
Multi monitor mode  
Instant playback at each channel  
Forced recording at each channel  
Easy drag & drop camera channel  
Powerful digital PTZ  
Real-time Statistics report  
(network bandwidth usage & CPU load)  
Multi monitor mode at Smart Viewer  
Up to monitor interfaces at PC

### Main window of Smart MAP, Smart ALARM

Windows Application Software  
Event based Map and Alarm app. for efficient management for distributed IP Cameras

### NVR Management configuration

System configuration

- System name, password,
- access control, http port

User configuration

- add, edit, delete
- user-wise privilege for view, playback

Storage configuration max 6.6TB for 1 HDD.

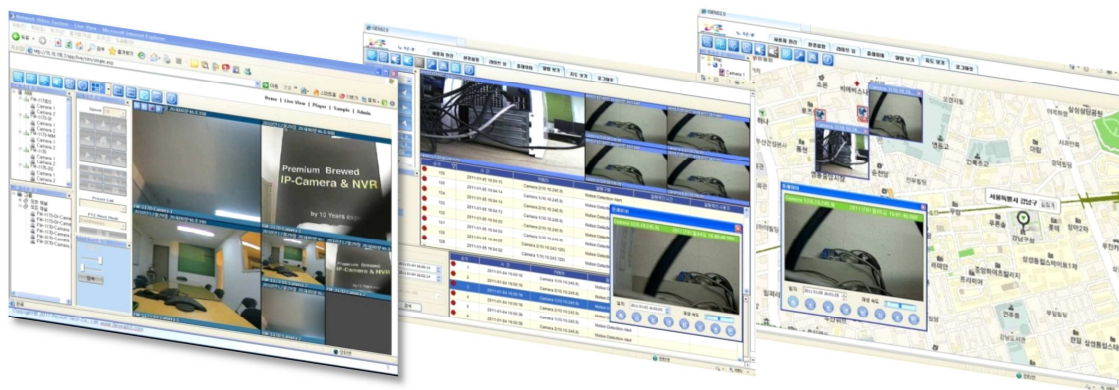
- Max 160TB for 1 smart NVR PC
- Quota, time limitation.
- E-mail reporting

IP-device configuration

- configuration wizard for easy install
- search, auto/manual registration
- Multi Vendor IP camera registration
- Homepage connection for each IP device

Camera Configuration and control

- Camera name, resolution, quality
- PTZ control, Alarm On/Off,
- Event receiving ( sensor, motion etc. )



## Web Based Professional Video Management and Storage Software

- **Ordering Information**

| version    | No. channel | Limit   | storage | Retransmission stream | Multivendor IP Camera | Max Storage |
|------------|-------------|---------|---------|-----------------------|-----------------------|-------------|
| evaluation | 16ch        | 30 days | 16ch    | 64stream              | supported             | 160TB       |
| Official   | 16ch        | -       | 16ch    | 64stream              | supported             | 160TB       |
|            | 32ch        | -       | 32ch    | 128stream             | supported             | 160TB       |
|            | 64ch        | -       | 64ch    | 256stream             | supported             | 160TB       |

- **PC Requirement for SmartNVR**

PC requirement as below is highly recommended according to IP Camera's type and resolution and No. channels  
 OS: Windows XP Pro, Windows 7 Pro or higher, Video Card: 256MB RAM, 1024X768 Resolution or higher

| Encoding | Registered ch # | Resolution | CPU                       | memory |
|----------|-----------------|------------|---------------------------|--------|
| H.264    | 16ch            | D1         | Intel Core2Duo T5200      | 1.0GB  |
|          |                 | 720P       | Intel Core2Duo E7550      | 1.5GB  |
|          |                 | 1080P      | Intel Core i-5-2500S      | 2.0GB  |
|          | 32ch            | D1         | Intel Core2Duo E6700      | 1.0GB  |
|          |                 | 720P       | Intel Core i-5 750        | 2.0GB  |
|          |                 | 1080P      | Intel Core i-7 970        | 4.0GB  |
|          | 64ch            | D1         | Intel Core i-5 661        | 1.5GB  |
|          |                 | 720P       | Intel Xeon X5660          | 4.0GB  |
|          |                 | 1080P      | Intel Xeon X5680 Dual CPU | 4.0GB  |
| MJPEG    | 16ch            | D1         | Intel Core2Duo E6700      | 1.0GB  |
|          |                 | 720P       | Intel Core i-5 460M       | 1.5GB  |
|          |                 | 1080P      | Intel Core i-5 -2500      | 3.0GB  |
|          | 32ch            | D1         | Intel Core i-5 661        | 1.5GB  |
|          |                 | 720P       | Intel Core i-5 -2400S     | 2.0GB  |
|          |                 | 1080P      | Intel Xeon X5590 Dual CPU | 4.0GB  |
|          | 64ch            | D1         | Intel Core i-5 -2500      | 3.0GB  |
|          |                 | 720P       | Intel Xeon X5550 Dual CPU | 4.0GB  |
|          |                 | 1080P      | -                         | -      |

Notice : Required CPU, memory and performance might be different with recommended according to the image characteristics of real sites.

- **Supported IP Camera**

FlexWATCH, Axis, Panasonic, Mobotix, Arecont Vision, IQinvision, Vivotek, Acti, Avtech, Samsung, Truen, IcanTek, 3S